

Protective Life Ins Co

Group Affiliation: Protective Life Group
Address: 2801 Highway 280 South
 Birmingham AL 35223
Phone: 205-268-1000

Domicile: TN
NAIC Number: 68136
Year Established: 1907
Company Type: Stock

Ratings

A.M. Best Company(Best's Rating, 15 ratings) A+
 Standard & Poor's(Fin. Strength, 20 ratings) AA-
 Moody's(Fin. Strength, 21 ratings) A2
 Fitch Ratings(Fin. Strength, 21 ratings) A+
 Comdex Ranking(Percentile in Rated Companies) 88

Assets & Liabilities

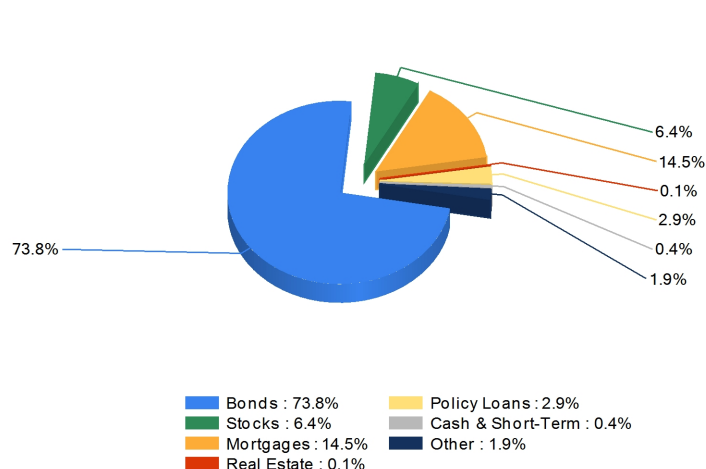
Total Admitted Assets 44,644,938
 Total Liabilities 40,408,038
 Separate Accounts 15,506,028
 Total Surplus & AVR 4,371,382
 As % of General Account Assets 15.0%

Invested Asset Distribution

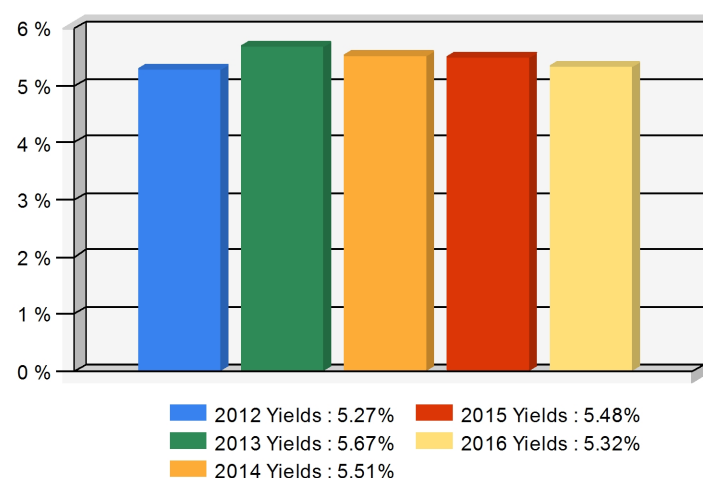
Total Invested Assets 28,157,026

5 Year Investment Yields

5 Year Average 5.45%



Distribution of the invested assets



Net yield on mean invested assets

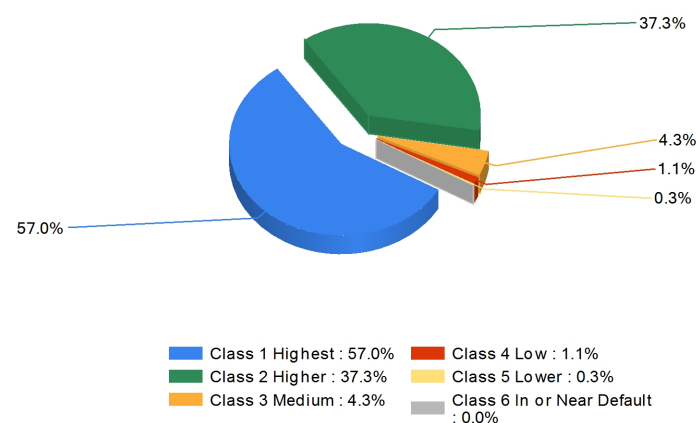
Non-Performing Assets

Bonds In or Near Default 0.1%
 Problem Mortgages 0.0%
 Real Estate Acquired by Foreclosure 0.0%
 Total Non-Performing Assets/Surplus & AVR 0.1%
 As a Percent of Invested Assets 0.0%

Income & Earnings

Total Income 5,200,812
 Net Premiums Written 2,378,758
 Earnings Before Dividends and Taxes -344,015
 Net Operating Earnings -235,298

Bond Quality



Distribution of bond classes

A Best's Financial Strength Rating opinion addresses the relative ability of an insurer to meet its ongoing insurance obligations. It is not a warranty of a company's financial strength and ability to meet its obligations to policyholders. View our Important Notice: Best's Credit Ratings for a disclaimer notice and complete details at <http://www.ambest.com/ratings/notice>.

Data for Year-End 2016 from the life insurance companies' statutory annual statements. All dollar amounts are in thousands. All ratings shown are current as of June 01, 2017.

Presented by: Seixas Milner, Milner Group, 833 Hurricane Shoals Road, Lawrenceville, GA 30043 Phone: (800) 926-9206 Email: Support@milnergroup.com

List of Company Ratings

Company: Protective Life Ins Co
Domicile: TN
Established: 1907

A.M. Best Company Rating

A+

Superior. Assigned to companies that have, in our opinion, a superior ability to meet their ongoing obligations to policyholders.

Standard & Poor's Financial Strength Rating

AA-

An insurer rated 'AA' has VERY STRONG financial security characteristics, differing only slightly from those rated higher.

Moody's Financial Strength Rating

A2

Insurance companies rated A offer good financial security. However, elements may be present which suggest a susceptibility to impairment sometime in the future.

Fitch Ratings' Insurer Financial Strength Rating

A+

Strong. 'A' IFS ratings denote a low expectation of ceased or interrupted payments. They indicate strong capacity to meet policyholder and contract obligations. This capacity may, nonetheless, be more vulnerable to changes in circumstances or in economic conditions than is the case for higher ratings.

Comdex Ranking - VitalSigns Composite Index

88

The Comdex gives the average percentile ranking of this company in relation to all other companies that have been rated by the rating services. The Comdex Ranking is the percentage of companies that are rated lower than this company.

A Best's Financial Strength Rating opinion addresses the relative ability of an insurer to meet its ongoing insurance obligations. It is not a warranty of a company's financial strength and ability to meet its obligations to policyholders. View our Important Notice: Best's Credit Ratings for a disclaimer notice and complete details at <http://www.ambest.com/ratings/notice>.

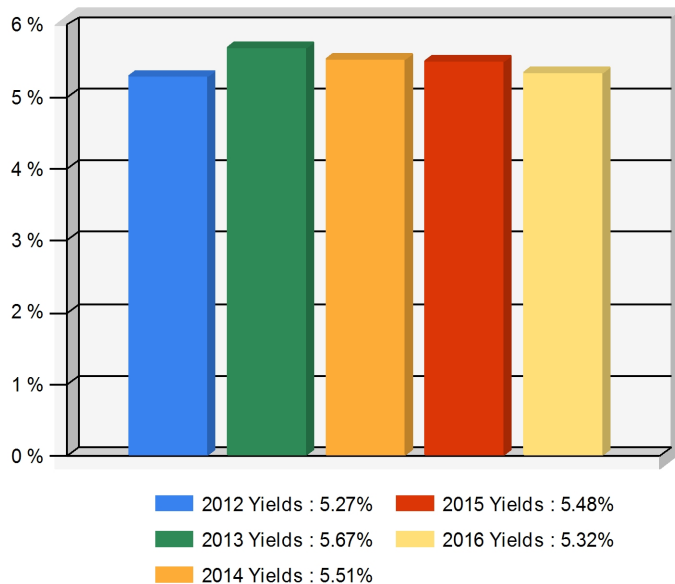
Watch list identifiers follow the ratings if the company is on the rating service's watch list. The identifier indicates a possible upgrade (w+), downgrade (w-), or unknown change (w).

The ratings on this report are current as of June 01, 2017. These ratings have been selected by your life insurance advisor from among the ratings assigned to this insurer.

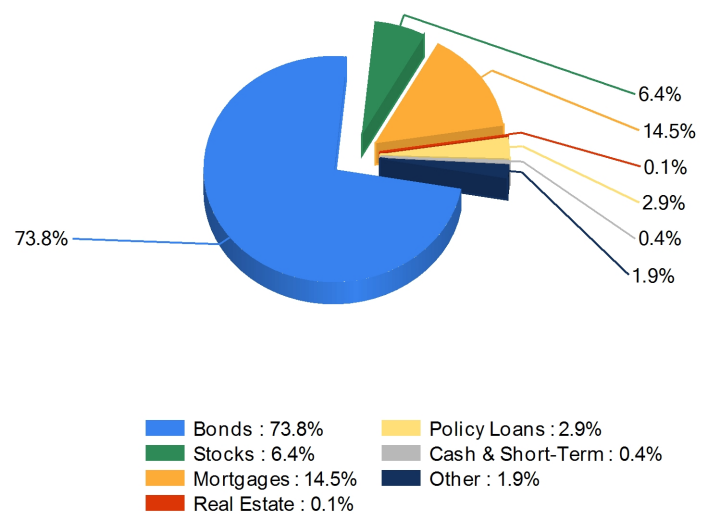
Presented by: Seixas Milner, Milner Group, 833 Hurricane Shoals Road, Lawrenceville, GA 30043 Phone: (800) 926-9206 Email: Support@milnergroup.com

Protective Life Ins Co

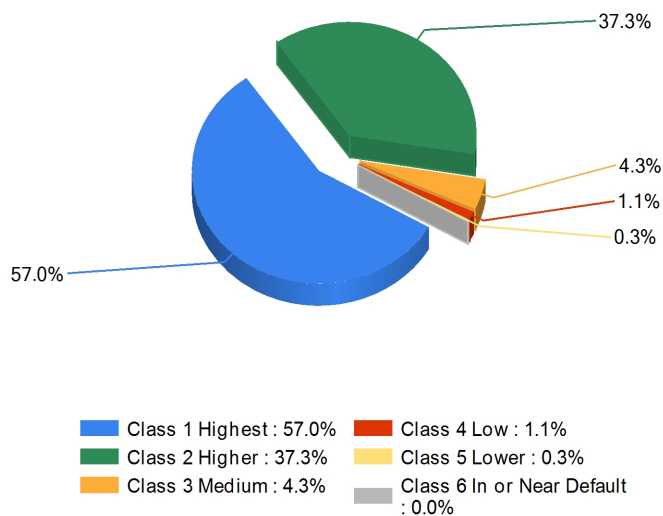
5 Year Investment Yields



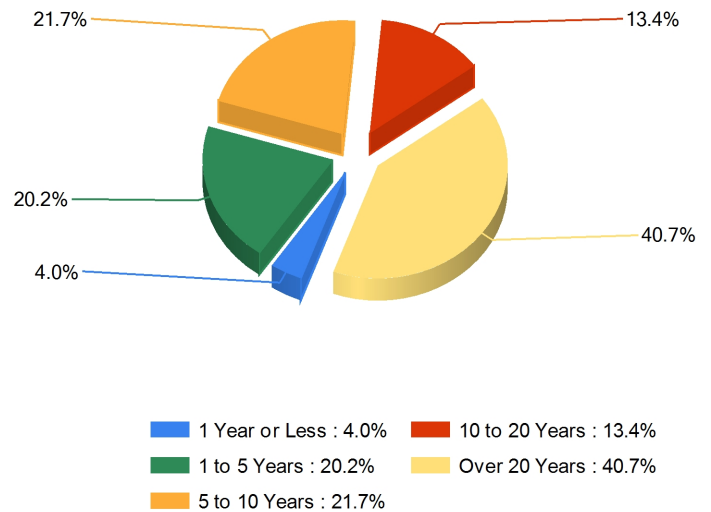
Invested Asset Distribution



Bond Quality



Bond Maturity



Data for Year-End 2016 from the life insurance companies' statutory annual statements. This information represents only one aspect of a company's performance. All dollar amounts are in thousands.

Presented by: Seixas Milner, Milner Group, 833 Hurricane Shoals Road, Lawrenceville, GA 30043 Phone: (800) 926-9206 Email: Support@milnergroup.com