

Symetra Life Ins Co

Group Affiliation: Symetra Life Group
Address: P.O. Box 34690
 Seattle WA 98124-1690
Phone: 425-256-8000

Domicile: IA
NAIC Number: 68608
Year Established: 1957
Company Type: Stock

Ratings

A.M. Best Company(Best's Rating, 15 ratings) A
 Standard & Poor's(Fin. Strength, 20 ratings) A
 Moody's(Fin. Strength, 21 ratings) A2
 Fitch Ratings(Fin. Strength, 21 ratings) A
 Comdex Ranking(Percentile in Rated Companies) 77

Assets & Liabilities

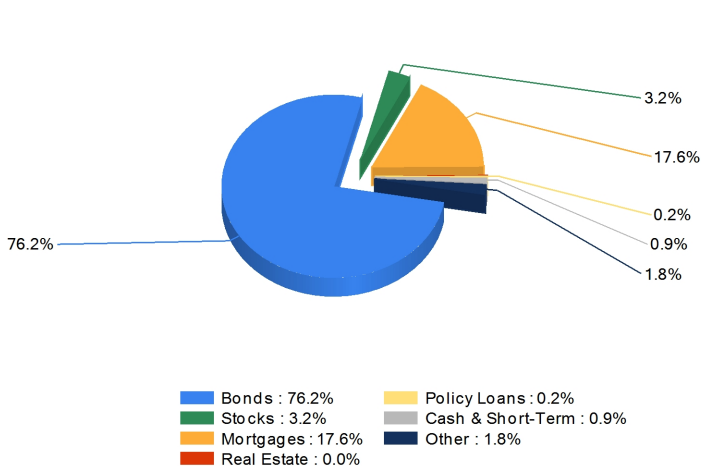
Total Admitted Assets 34,289,243
 Total Liabilities 32,206,860
 Separate Accounts 5,453,572
 Total Surplus & AVR 2,418,265
 As % of General Account Assets 8.4%

Invested Asset Distribution

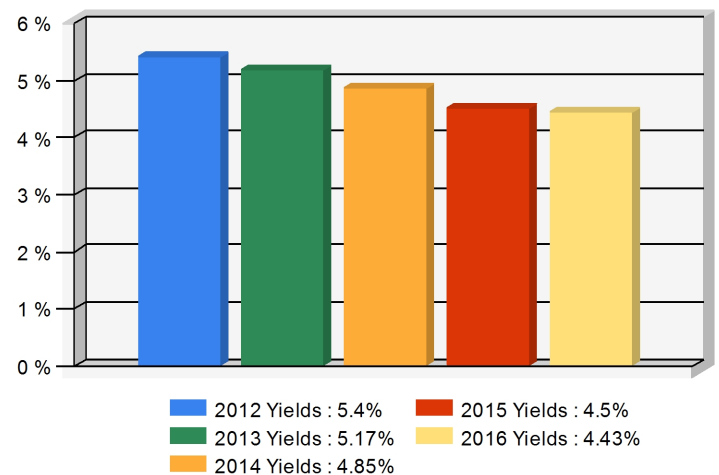
Total Invested Assets 28,202,804

5 Year Investment Yields

5 Year Average 4.87%



Distribution of the invested assets



Net yield on mean invested assets

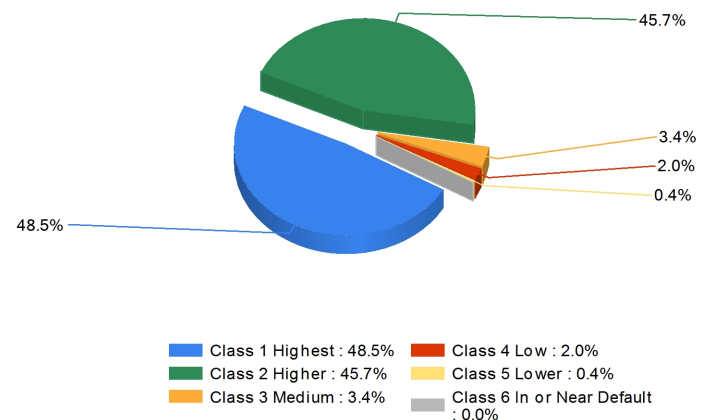
Non-Performing Assets

Bonds In or Near Default 0.1%
 Problem Mortgages 0.0%
 Real Estate Acquired by Foreclosure 0.0%
 Total Non-Performing Assets/Surplus & AVR 0.1%
 As a Percent of Invested Assets 0.0%

Income & Earnings

Total Income 5,719,514
 Net Premiums Written 4,421,769
 Earnings Before Dividends and Taxes 50,633
 Net Operating Earnings 53,618

Bond Quality



Distribution of bond classes

A Best's Financial Strength Rating opinion addresses the relative ability of an insurer to meet its ongoing insurance obligations. It is not a warranty of a company's financial strength and ability to meet its obligations to policyholders. View our Important Notice: Best's Credit Ratings for a disclaimer notice and complete details at <http://www.ambest.com/ratings/notice>.

Data for Year-End 2016 from the life insurance companies' statutory annual statements. All dollar amounts are in thousands. All ratings shown are current as of June 01, 2017.

Presented by: Seixas Milner, Milner Group, 833 Hurricane Shoals Road, Lawrenceville, GA 30043 Phone: (800) 926-9206 Email: Support@milnergroup.com

List of Company Ratings

Company: Symetra Life Ins Co
Domicile: IA
Established: 1957

A.M. Best Company Rating

A

Excellent. Assigned to companies that have, in our opinion, an excellent ability to meet their ongoing obligations to policyholders.

Standard & Poor's Financial Strength Rating

A

An insurer rated 'A' has STRONG financial security characteristics, but is somewhat more likely to be affected by adverse business conditions than are insurers with higher ratings.

Moody's Financial Strength Rating

A2

Insurance companies rated A offer good financial security. However, elements may be present which suggest a susceptibility to impairment sometime in the future.

Fitch Ratings' Insurer Financial Strength Rating

A

Strong. 'A' IFS ratings denote a low expectation of ceased or interrupted payments. They indicate strong capacity to meet policyholder and contract obligations. This capacity may, nonetheless, be more vulnerable to changes in circumstances or in economic conditions than is the case for higher ratings.

Comdex Ranking - VitalSigns Composite Index

77

The Comdex gives the average percentile ranking of this company in relation to all other companies that have been rated by the rating services. The Comdex Ranking is the percentage of companies that are rated lower than this company.

A Best's Financial Strength Rating opinion addresses the relative ability of an insurer to meet its ongoing insurance obligations. It is not a warranty of a company's financial strength and ability to meet its obligations to policyholders. View our Important Notice: Best's Credit Ratings for a disclaimer notice and complete details at <http://www.ambest.com/ratings/notice>.

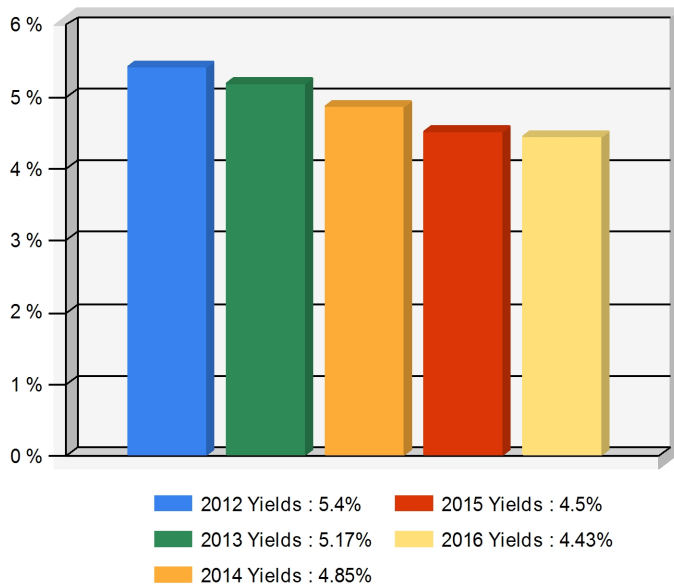
Watch list identifiers follow the ratings if the company is on the rating service's watch list. The identifier indicates a possible upgrade (w+), downgrade (w-), or unknown change (w).

The ratings on this report are current as of June 01, 2017. These ratings have been selected by your life insurance advisor from among the ratings assigned to this insurer.

Presented by: Seixas Milner, Milner Group, 833 Hurricane Shoals Road, Lawrenceville, GA 30043 Phone: (800) 926-9206 Email: Support@milnergroup.com

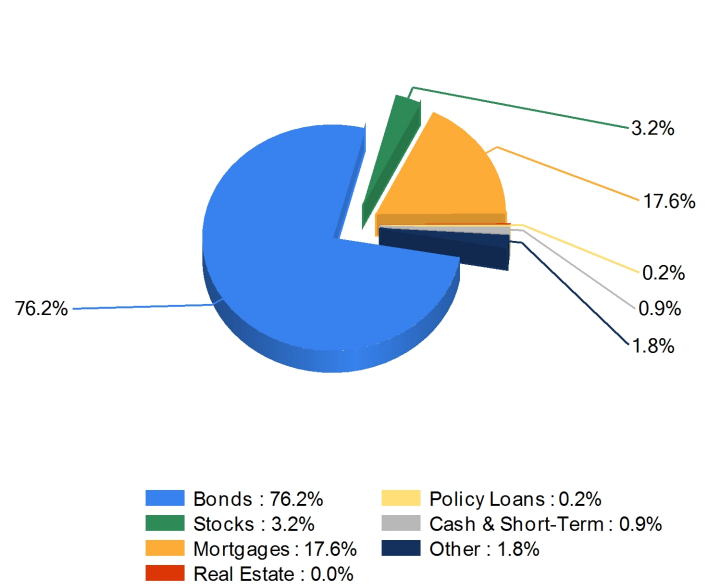
Symetra Life Ins Co

5 Year Investment Yields



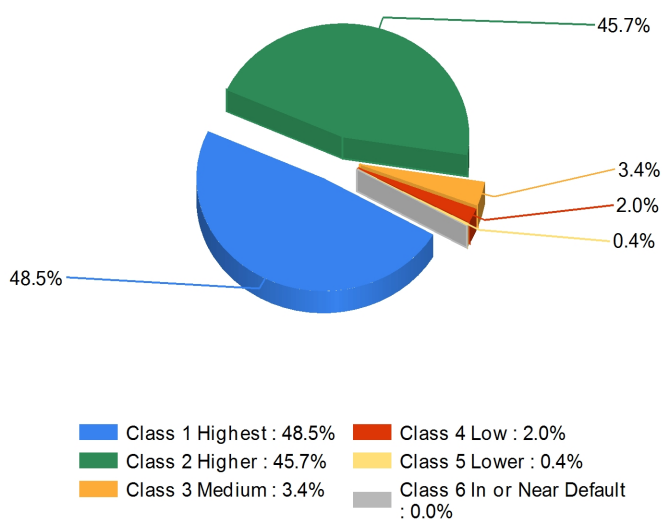
Net yield on mean invested assets

Invested Asset Distribution



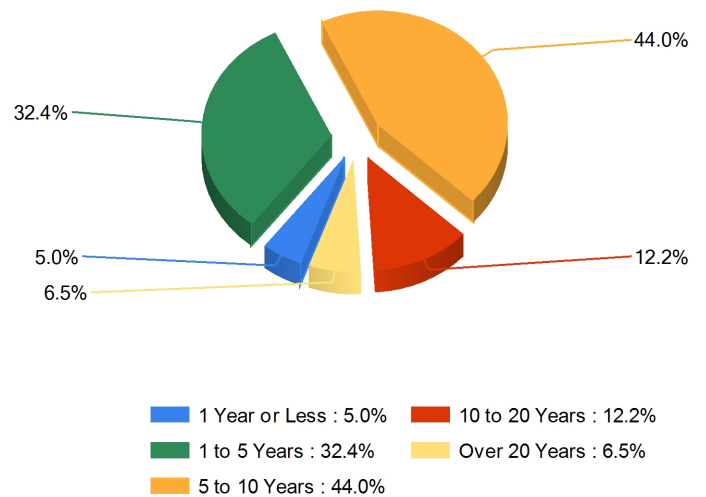
Distribution of the invested assets

Bond Quality



Distribution of bond classes

Bond Maturity



Distribution of bond maturity

Data for Year-End 2016 from the life insurance companies' statutory annual statements. This information represents only one aspect of a company's performance. All dollar amounts are in thousands.

Presented by: Seixas Milner, Milner Group, 833 Hurricane Shoals Road, Lawrenceville, GA 30043 Phone: (800) 926-9206 Email: Support@milnergroup.com